



Dii 
Commerce



"DIL COMMERCE" doo Podgorica
Stambeni objekat na UP 57,58 i 59
zona "B" DUP opština Podgorica "Zabjelo 9"

www.dilcommerce.com

GARSONJERA



1. SOBA	15.95 m ²
2. KUHINJA	5.10 m ²
3. KUPATILO	4.25 m ²
4. TERASA	2.60 m ²

NETO STANA : 27.80 m²

prizemlje



tipski sprat



mansarda



JEDNOSOBAN STAN - TIP 1



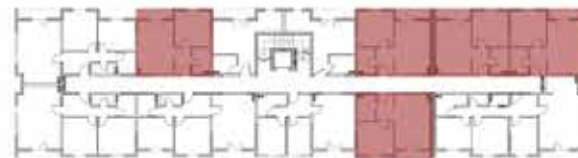
1. HODNIK	4.10 m ²
2. DNEVNA SOBA	17.20 m ²
3. KUPATILO	4.15 m ²
4. TERASA	3.00 m ²
5. SPAVACA SOBA	11.40 m ²

NETO STANA : 39.85m²

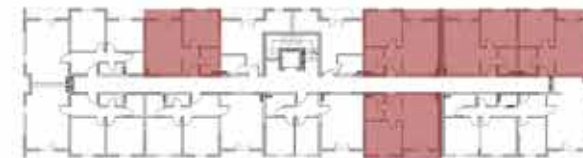
prizemlje



tipski sprat



mansarda



JEDNOSOBBAN STAN - TIP 2



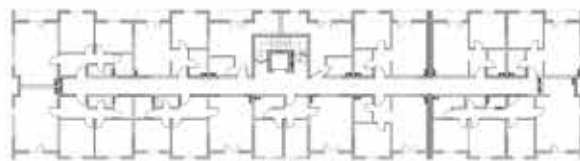
1. HODNIK	4.10 m ²
2. DNEVNA SOBA	22.70 m ²
3. KUPATILO	4.20 m ²
4. TERASA	3.75 m ²
5. SPAVACA SOBA	10.25 m ²

NETO STANA : 45.00m²

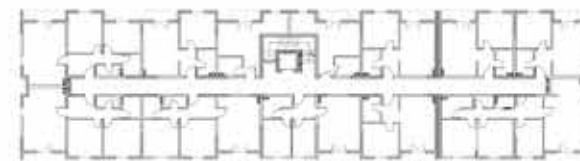
prizemlje



tipski sprat



mansarda



DVOSOBAN STAN - TIP 1



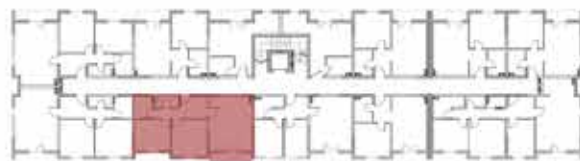
1. HODNIK	7.85 m ²
2. DNEVNA SOBA	20.85 m ²
3. WC KABINA	2.40 m ²
4. TERASA	3.65 m ²
5. SPAVACA SOBA	10.10 m ²
6. SPAVACA SOBA	11.90 m ²
7. KUPATILO	3.65 m ²

NETO STANA : 60.40 m²

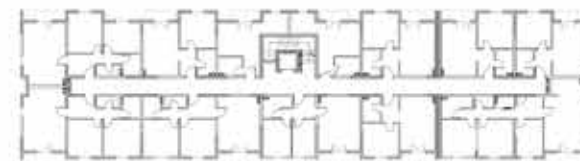
prizemlje



tipski sprat



mansarda



DVOSOBAN STAN - TIP 2



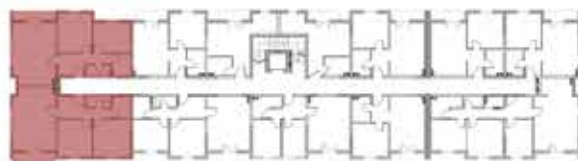
1. HODNIK	7.85 m ²
2. DNEVNA SOBA	23.95 m ²
3. WC KABINA	2.40 m ²
4. TERASA	4.45 m ²
5. SPAVACA SOBA	11.30 m ²
6. SPAVACA SOBA	12.45 m ²
7. KUPATILO	3.65 m ²

NETO STANA : 66.05 m²

prizemlje



tipski sprat



mansarda



DVOSOBAN STAN - TIP 3



1. HODNIK	5.65 m ²
2. DNEVNA SOBA	20.90 m ²
3. KUPATILO	4.50 m ²
4. TERASA	4.25 m ²
5. SPAVACA SOBA	7.55 m ²
6. SPAVACA SOBA	9.75 m ²

NETO STANA : 52.60 m²

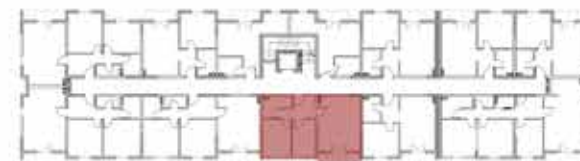
prizemlje



tipski sprat



mansarda



DVOSOBAN STAN - TIP 4



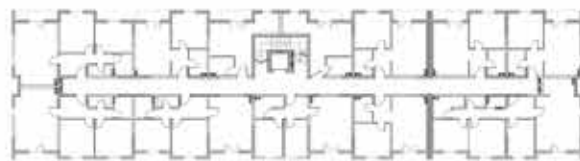
1. HODNIK	7.85 m ²
2. DNEVNA SOBA	20.80 m ²
3. WC KABINA	2.40 m ²
4. TERASA	4.50 m ²
5. SPAVACA SOBA	11.95 m ²
6. SPAVACA SOBA	11.85 m ²
7. KUPATILO	3.65 m ²

NETO STANA : 63.00 m²

prizemlje



tipski sprat



mansarda



TROSOBAN STAN - TIP 1



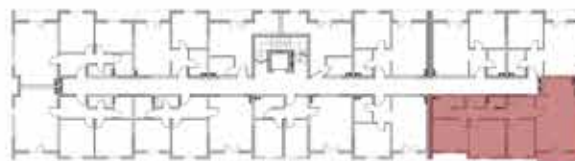
1. HODNIK	10.30 m ²
2. DNEVNA SOBA	27.10 m ²
3. WC KABINA	1.95 m ²
4. TERASA	4.60 m ²
5. SPAVACA SOBA	9.75m ²
6. SPAVACA SOBA	10.10 m ²
7. SPAVACA SOBA	11.45 m ²
8. KUPATILO	4.95 m ²
9. OSTAVA	1.80 m ²

NETO STANA : 82.00 m²

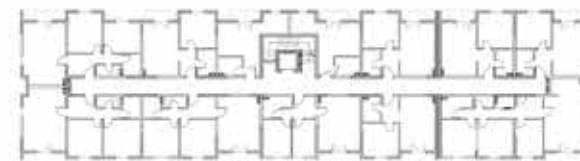
prizemlje



tipski sprat



mansarda



TROSOBAN STAN - TIP 2



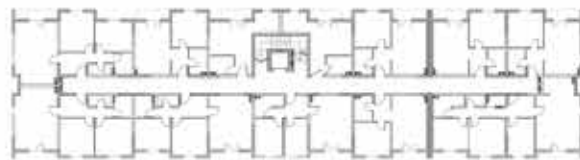
1. HODNIK	10.30 m ²
2. DNEVNA SOBA	27.10 m ²
3. WC KABINA	1.95 m ²
4. TERASA	4.60 m ²
5. SPAVACA SOBA	9.75m ²
6. SPAVACA SOBA	11.90 m ²
7. SPAVACA SOBA	11.45 m ²
8. KUPATILO	4.95 m ²
9. OSTAVA	1.80 m ²

NETO STANA : 83.80 m²

prizemlje



tipski sprat



mansarda





Dil 
Commerce